

Oracle® Hospitality OPERA Property Management

Workstation Setup Guide

Release 5.5

E76452-01

July 2016

Copyright © 2015, 2016, Oracle and/or its affiliates. All rights reserved.

This software and related documentation are provided under a license agreement containing restrictions on use and disclosure and are protected by intellectual property laws. Except as expressly permitted in your license agreement or allowed by law, you may not use, copy, reproduce, translate, broadcast, modify, license, transmit, distribute, exhibit, perform, publish, or display any part, in any form, or by any means. Reverse engineering, disassembly, or decompilation of this software, unless required by law for interoperability, is prohibited.

The information contained herein is subject to change without notice and is not warranted to be error-free. If you find any errors, please report them to us in writing.

If this software or related documentation is delivered to the U.S. Government or anyone licensing it on behalf of the U.S. Government, then the following notice is applicable:

U.S. GOVERNMENT END USERS: Oracle programs, including any operating system, integrated software, any programs installed on the hardware, and/or documentation, delivered to U.S. Government end users are "commercial computer software" pursuant to the applicable Federal Acquisition Regulation and agency-specific supplemental regulations. As such, use, duplication, disclosure, modification, and adaptation of the programs, including any operating system, integrated software, any programs installed on the hardware, and/or documentation, shall be subject to license terms and license restrictions applicable to the programs. No other rights are granted to the U.S. Government.

This software or hardware is developed for general use in a variety of information management applications. It is not developed or intended for use in any inherently dangerous applications, including applications that may create a risk of personal injury. If you use this software or hardware in dangerous applications, then you shall be responsible to take all appropriate fail-safe, backup, redundancy, and other measures to ensure its safe use. Oracle Corporation and its affiliates disclaim any liability for any damages caused by use of this software or hardware in dangerous applications.

Oracle and Java are registered trademarks of Oracle and/or its affiliates. Other names may be trademarks of their respective owners.

Intel and Intel Xeon are trademarks or registered trademarks of Intel Corporation. All SPARC trademarks are used under license and are trademarks or registered trademarks of SPARC International, Inc. AMD, Opteron, the AMD logo, and the AMD Opteron logo are trademarks or registered trademarks of Advanced Micro Devices. UNIX is a registered trademark of The Open Group.

This software or hardware and documentation may provide access to or information about content, products, and services from third parties. Oracle Corporation and its affiliates are not responsible for and expressly disclaim all warranties of any kind with respect to third-party content, products, and services unless otherwise set forth in an applicable agreement between you and Oracle. Oracle Corporation and its affiliates will not be responsible for any loss, costs, or damages incurred due to your access to or use of third-party content, products, or services, except as set forth in an applicable agreement between you and Oracle.

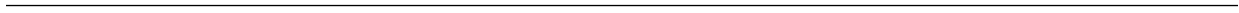
Contents

1	Workstation Operating System Requirement	
2	Installing the Java Runtime Client	
3	Setting Microsoft Internet Explorer Options	
	Adding Trusted Sites.....	3-1
	Turning on Pop-up Blocker.....	3-3
	Changing Advanced Settings.....	3-3
	Disabling Add-ons.....	3-4
	Disabling SmartScreen Filter.....	3-5
4	Installing Client Side Applications	
	Installing the RegTerm Utility	4-1
	Installing OPERA Print Control	4-2
	Installing Adobe Acrobat Reader	4-2
	Installing Screen Painter	4-2
	Installing Oracle Business Intelligence Publisher	4-2
5	Setting Adobe Acrobat Reader Preferences	

Workstation Operating System Requirement

To run Oracle Hospitality OPERA Property Management Version 5.5, your workstation must use one of these operating systems:

- Windows 7 Professional Edition or later
- Windows 8 Professional Edition or later
- Windows 10 Professional Edition or later



Installing the Java Runtime Client

1. Log on to the workstation with a user account that has local administrator rights.
2. Open **Microsoft Internet Explorer** and go to: <http://www.oracle.com/technetwork/java/javase/downloads/jre8-downloads-2133155.html>

The screenshot shows the Oracle Java SE Runtime Environment 8 Downloads page. The page title is "Java SE Runtime Environment 8 Downloads". Below the title, there is a section for "Java SE Runtime Environment 8u77" with a license agreement section. The license agreement section has two radio buttons: "Accept License Agreement" (selected) and "Decline License Agreement". Below the license agreement, there is a table of download links for various operating systems and architectures.

Product / File Description	File Size	Download
Linux x86	49.06 MB	jre-8u77-linux-i586.rpm
Linux x86	70.54 MB	jre-8u77-linux-i586.tar.gz
Linux x64	46.94 MB	jre-8u77-linux-x64.rpm
Linux x64	68.47 MB	jre-8u77-linux-x64.tar.gz
Mac OS X	64.27 MB	jre-8u77-macosx-x64.dmg
Mac OS X	55.95 MB	jre-8u77-macosx-x64.tar.gz
Solaris SPARC 64-bit	52.1 MB	jre-8u77-solaris-sparcv9.tar.gz
Solaris x64	49.67 MB	jre-8u77-solaris-x64.tar.gz
Windows x86 Online	0.7 MB	jre-8u77-windows-i586-rtw.exe
Windows x86 Offline	48.44 MB	jre-8u77-windows-i586.exe
Windows x86	59.35 MB	jre-8u77-windows-i586.tar.gz
Windows x64	54.93 MB	jre-8u77-windows-x64.exe
Windows x64	62.68 MB	jre-8u77-windows-x64.tar.gz

3. Under **Java SE Runtime Environment 8u77**, click the **Accept License Agreement** option.
4. Next to **Windows x86 Offline**, click the link [jre-8u77-windows-i586.exe](#) to begin the download.
5. When the message 'Do you want to run or save [jre-8u77-windows-i586.exe](#) (48.4 MB) from download.oracle.com?' appears, click **Run**.



6. Click the **Java** icon on the taskbar.

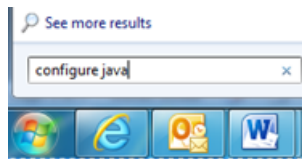


7. On the **Java Setup - Welcome** screen, click **Install**.

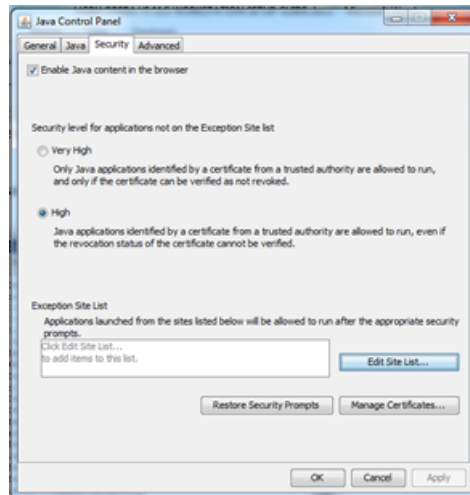
After the installation has completed, the **Java Setup - Uninstall out-of-date versions** screen appears.



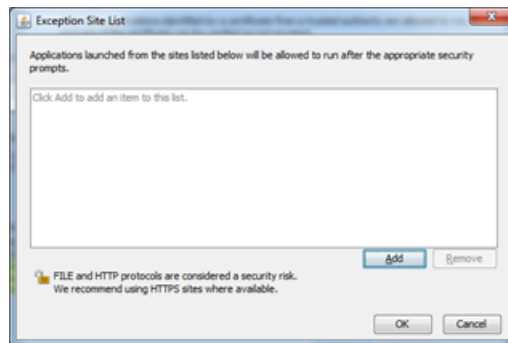
8. Click **Uninstall**.
9. Click the Microsoft Windows Start button.



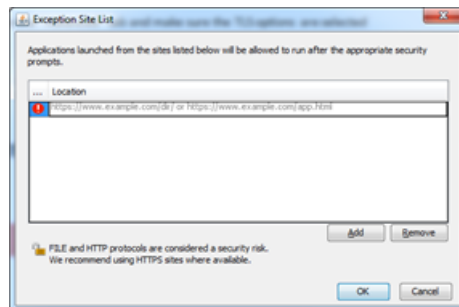
10. Click in the **Search programs and files** field, type `configure java` and then press **Enter**.
11. On the **Java Control Panel** screen, click the **Security** tab.



12. Click **Edit Site List...**



13. On the **Exception Site List** screen, click **Add**.



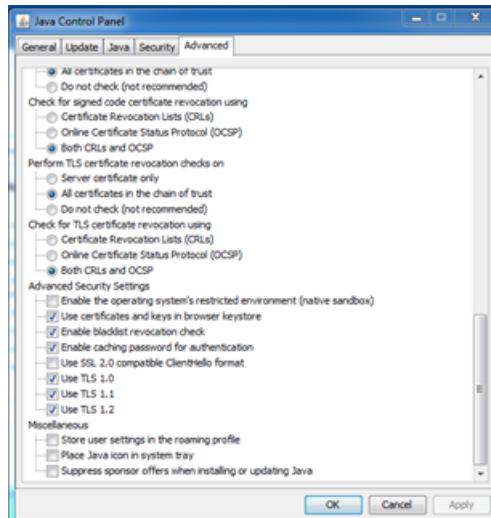
14. Click in the **Location** field, and enter your OPERA application URL with http, for example, `http://yourOPERAURL.microsdc.us`

15. Click **Add**.

16. Click in the **Location** field, and enter your OPERA application URL with https, for example, `https://yourOPERAURL.microsdc.us`

17. Click **OK**.

18. On the **Java Control Panel** screen, select the **Advanced** tab.



19. Select these check boxes:

- a. Use TLS 1.0
- b. Use TLS 1.1
- c. Use TLS 1.2

20. Click **Apply**.

21. Click **OK**.

22. Close **Microsoft Internet Explorer**, open it again, and log into OPERA.

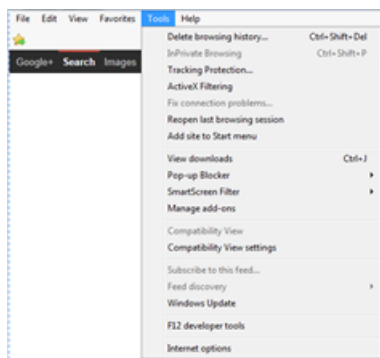
Setting Microsoft Internet Explorer Options

There are several places where changes need to be made to the client machine's Microsoft Internet Explorer options. Depending on your browser version, the steps below may differ.

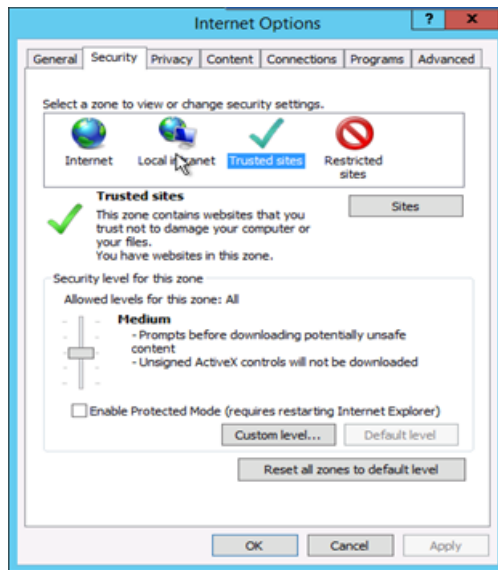
Microsoft Edge does not support OPERA.

Adding Trusted Sites

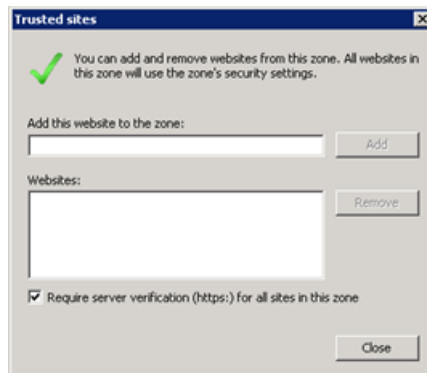
1. Log on to the workstation with a user account that has local administrator rights.
2. Open **Microsoft Internet Explorer**.
3. Select the **Tools** menu.
4. Click **Internet options**.



5. On the **Internet Options** screen, select the **Security** tab.
6. Click the green check mark for **Trusted sites**.



7. Under **Security level for this zone**, change it to **Medium**
8. Click **Sites**.



9. Click in the **Add this website to the zone** field.
10. Enter your OPERA application URL with both http and https as in these examples:

- http://yourOPERAURL.microsdc.us
- https://yourOPERAURL.microsdc.us

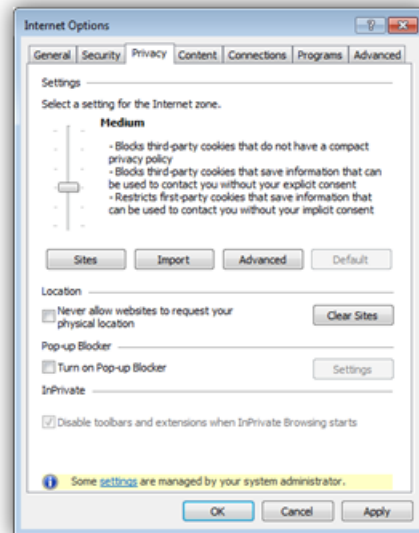
For sites that have multiple application servers for OPERA or for load balanced environments, ensure that all URLs are entered.

11. Click **Add**.
12. Click **Close**.
13. Click **Custom Level** and click **Enable** for these Settings:
 - ActiveX Controls and plug-ins

- Miscellaneous
14. Click OK.

Turning on Pop-up Blocker

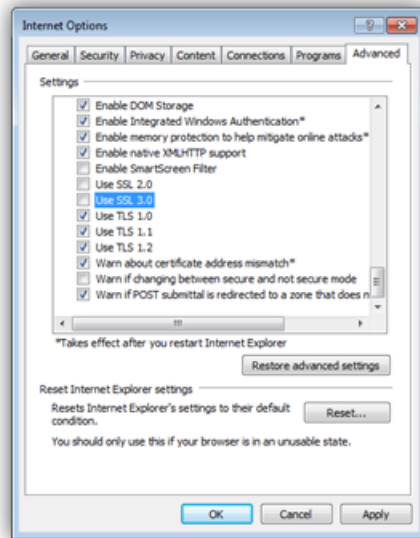
1. On the **Internet Options** screen, select the **Privacy** tab.



2. Unselect the **Turn on Pop-up Blocker** option.

Changing Advanced Settings

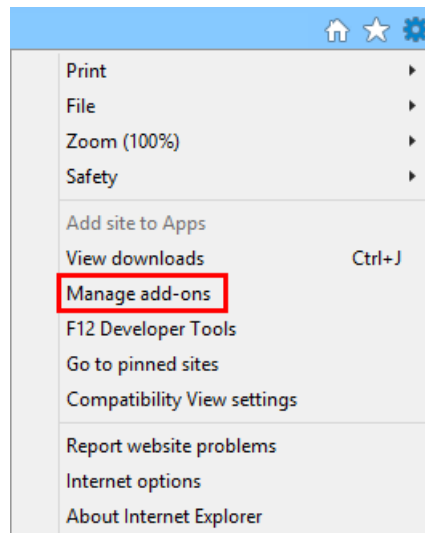
1. On the **Internet Options** screen, select the **Advanced** tab.



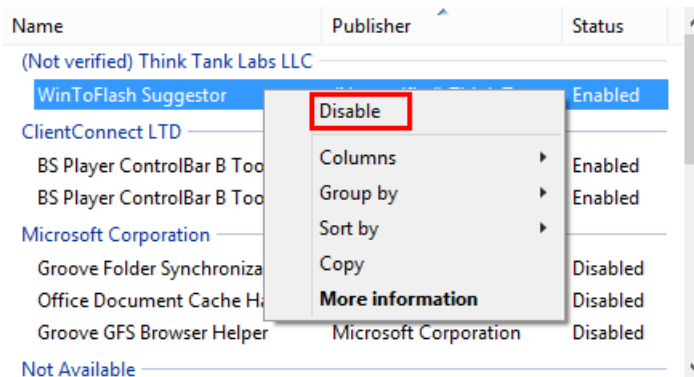
2. Select these check boxes:
 - Use TLS 1.0
 - Use TLS 1.1
 - Use TLS 1.2
3. Click **Apply**.
4. Click **OK**.

Disabling Add-ons

1. On the **Internet Options** screen, select the **Programs** tab.
2. Click **Manage Add-ons**.
3. On **Toolbars and Extensions**, disable all except for **Java** and **Adobe**.
4. Click **Close**.
5. Click **OK**.
6. Click the **Tools** icon.



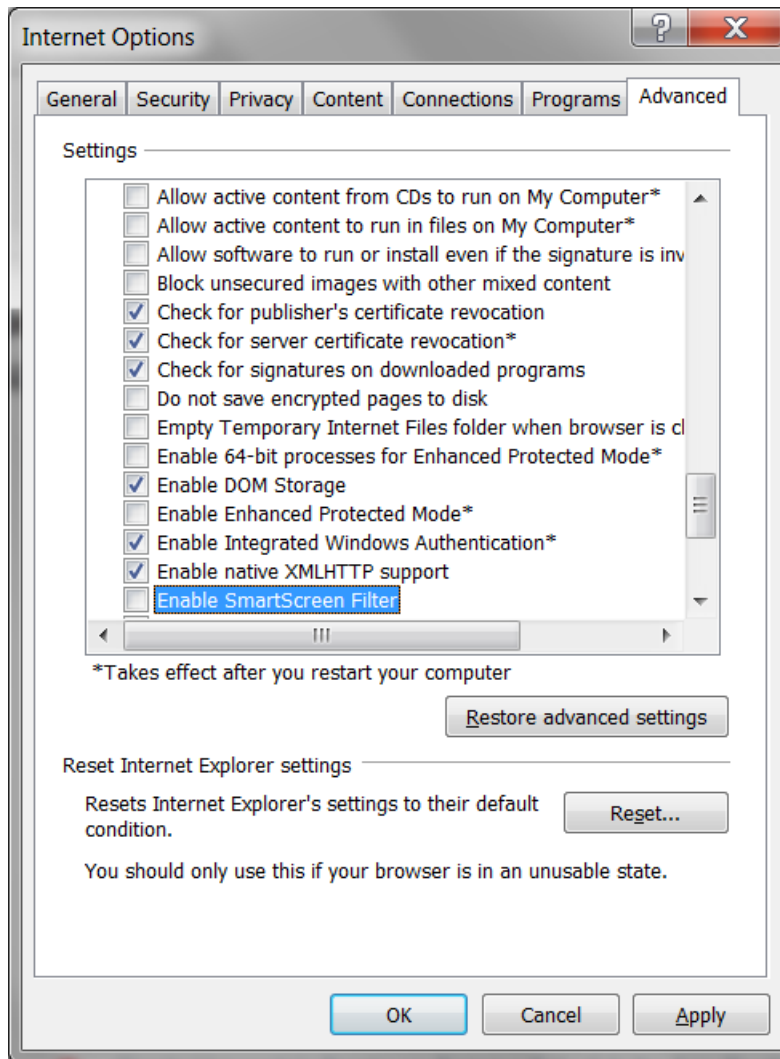
7. Select **Manage add-ons**.
8. Go to the appropriate type of add-ons and find the one you want to disable, right-click it and select **Disable**.



Disabling SmartScreen Filter

Disabling SmartScreen Filter

1. On the **Internet Options** screen, select the **Advanced** tab.



2. Scroll down to the **Security** section and unselect the **Enable SmartScreen Filter** check box.
3. Click **OK**.

Installing Client Side Applications

If you do not want the OPERA Login Page to automatically install the software required by JInitiator when you log in, follow these procedures to preinstall all the required client utilities.

Installing the RegTerm Utility

1. Connect to the application server.
2. Install the RegTerm utility using this URL: <http://<appserverhost>/InstallRegterm.exe>

Where <appserverhost> is the name of your application server.

3. If not completed automatically when logging into OPERA, configure the RegTerm utility by manually creating a termreg.ini file in the C:\Program Files (x86)\Micros Systems, Inc\Opera\OperaRegTerm folder.

The contents of the file should look like one of the following two examples, depending on your font size.

With Large Fonts

```
[OperaTerminal]
OPERA_TERMINAL=<host name with domain>.<unique number>|LargeFont
UseIni=1
```

Example

```
[OperaTerminal]
OPERA_TERMINAL=mymachine.micros.com.123454321|LargeFont
UseIni=1
```

Without Large Fonts

```
[OperaTerminal]
OPERA_TERMINAL=<host name with domain>.<unique number>
UseIni=1
```

Example

```
[OperaTerminal]
OPERA_TERMINAL=mymachine.micros.com.123454321
UseIni=1
```

Installing OPERA Print Control

The Print Control is loaded along with the Adobe Object and checks for printer availability and status. If it is not automatically installed, perform the step below to enable stream printing to work within OPERA.

1. Connect to the application server.
2. Install OPERA Print Control using this URL: <http://<appserverhost>/InstallOperaPrintCtrl.exe>

Where <appserverhost> is the name of your application server.

Installing Adobe Acrobat Reader

If installing the client utilities from the OPERA login, the Adobe Acrobat Reader installation starts automatically while installing OPERA Print Control.

1. Connect to the application server.
2. Install Adobe Acrobat from the OPERA login page or by using this URL: <http://<appserverhost>/InstallAdobe.exe>

Where <appserverhost> is the name of your application server.

Installing Screen Painter

If it is not automatically installed, perform the step below to install Screen Painter.

1. Connect to the application server.
2. Install Screen Painter by using this URL: <http://<appserverhost>/InstallScreenWiz.exe>

Where <appserverhost> is the name of your application server.

Installing Oracle Business Intelligence Publisher

For sites that use BI Publisher to customize reports, a new version has been released that can be installed on Microsoft Windows 7 workstations. This is labeled as *release 4* of the OPERA BI Publisher Desktop installation.

On Microsoft Windows 8.1, Microsoft .NET Framework 4.5.1 is automatically included in the operating system.

The BI Publisher installation however, looks for Microsoft .NET Framework 2.0, which is included in Microsoft .NET Framework 3.5, but must be installed separately in Microsoft Windows 8.1.

Trying to install Microsoft .NET Framework 3.5 gives the following errors (which are also documented at http://docs.oracle.com/cd/E28280_01/bi.1111/e16518/toc.htm#BIEQI102):

- 0x800f0906: *Windows couldn't connect to the Internet to download necessary files. Make sure that you're connected to the Internet, and click Retry to try again.*
- 0x800F081F: *The changes could not be completed. Please reboot your computer and try again.*

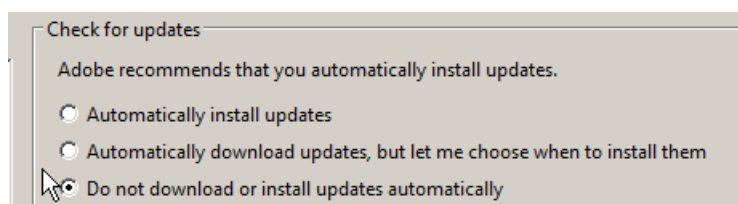
Use the Microsoft Windows operating system installation media and the workaround:
DISM /Online /Enable-Feature /FeatureName:NetFx3 /All /
LimitAccess /Source:d:\sources\sxs

Now Microsoft .NET Framework 3.5 installs correctly and the BI Publisher installation can continue. For additional information about installing BI Publisher, see http://docs.oracle.com/cd/E28280_01/bi.1111/e16518/toc.htm#BIEQI102.

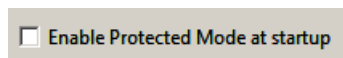
Setting Adobe Acrobat Reader Preferences

Depending on your Adobe Acrobat Reader version, the steps below may differ.

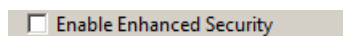
1. Open Adobe Acrobat Reader outside of the application.
2. Select **Edit**, select **Preferences**, select **Updater**, and select the **Do not download or install updates automatically** option.



3. Select **Edit**, select **Preferences**, select **General**, and unselect the **Enable Protected Mode at startup** check box.



4. Select **Edit**, select **Preferences**, select **Security (Enhanced)**, and unselect the **Enable Enhanced Security** check box.



5. Select **Edit**, select **Preferences**, select **Security (Enhanced)**, and select the **Automatically trust sites from my Win OS security zones** check box and verify that the OPERA URL is listed.

